

Tube light - Opal diffuser - direct distribution - impact-proof, through wired

Ceiling/wall and suspended mounting; PMMA enclosure, PMMA tube, opal, with high chemical resistance; suitable for agricultural purposes, resistant to ammonia; corrosion-resistant end caps and mounting clamps made of high-quality stainless steel V4A (316), also in chlorine- and salt-containing atmospheres; cable entries with M20 cable gland on the end face, suitable for the type of protection; Housing colour opal white/stainless steel; Light distribution direct distribution by means of Opal diffuser of PMMA plastic, round PMMA diffuser, with opal smooth surface, UGR (4H/8H) 24.8. Integrated driver. Electrical connection via 3-pole connection terminal in Quick Connect version. Quick connector on both sides, 3-pole to 2.5 mm² (rigid), feed-through wiring (3 x 1.5 mm²). Flexible thanks to freely positionable quick assembly clamps;

CHARACTERISTICS

Order number	50695454111
EAN number	4020863494378
Commodity code	94051140
Certification mark	IP 65/69K, Protection class I, F, D, Indoor, CE, DLG
Impact resistance (IK rating)	IK03 (-25°C), IK06 (40°C)
Ambient temperatur	ta -25°C to 40°C
Warranty period	5 years
State funding programs	BEG - Federal funding for efficient buildings (valid only for Germany)

ELECTRICAL ENGINEERING

Controller	Electronic driver (1 pcs.)
Wiring	3x2.5mm ²
System output	48W
Mains voltage	230V/50Hz
Circuit breakers (inrush current)	20 pieces/B10, 32 pieces/B16, 34 pieces/C10, 54 pieces/C16

LIGHTING TECHNOLOGY

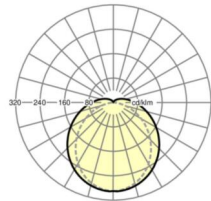
Placement	LED, Colour rendering/Light colour CRI ≥ 80 / 4000K
Colour tolerance (MacAdam)	3SDCM
Photobiological safety (Luminaire)	RG0
Nominal luminous flux	7666lm
LED service life	75000h L80/B10 (Tq 40°C), 95000h L80/B50 (Tq 40°C), 50000h L90/B50 (Tq 25°C)
Luminaire luminous efficiency	160lm/W
UGR lat./long.	24.8 / 23.2

MECHANICS

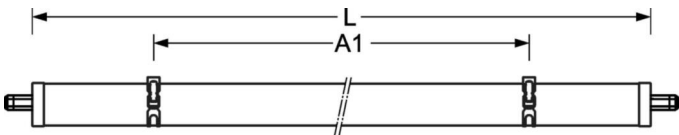
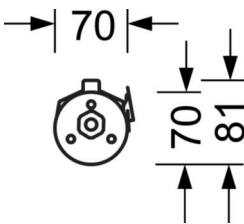
Housing colour	opal white/stainless steel
Dimensions (LxWxH/DxH)	70mm x 1490mm
Weight (net)	1.94kg
Cable entry KE	at the end
Type of installation	Ceiling-mounted single installation, Pendant individual mounting, Wall mounting, Pendulum mounting rail assembly on chain, Ceiling-mounted mounting rail installation

DEEP-LINK

<https://www.regiolux.de/en/article/50695454111>



Reference	LED 7700lm 840
ηLB	100 %
Φ ↓/↑	91 % / 9 %
UGR lat./long.	24.8 / 23.2



Dimensions

H	1490 mm	Height
D	70 mm	Diameter
A1	900 mm	Mounting distance single mounting
A3	675 mm	Mounting distance between luminaires in a light run arrangement
A4	1200 mm	Mounting distance (width)
HA	1580	Height cover
X	0 mm	Distance cable infeed to the center of the luminaire on the X-axis
Y	750 mm	Distance cable infeed to the center of the luminaire on the Y-axis

